

CONFERENCE
LEADERS
MOSAIC

MOSAIC INSTITUTE

is a conference-based, Anabaptist school of leadership for newly credentialed leaders, experienced pastors, Conference Related Ministry leaders, and lay leaders in Mosaic congregations and beyond.



MOSAIC
Institute

PARTNERS IN LEADERSHIP:

A JOURNEY OF
DISCIPLESHIP

Spring 2021

OUR PRIORITIES

- To foster relationships within Mosaic Conference.
- To provide orientation for newly credentialed leaders and leaders who come to us from other traditions.
- To help people grow into our conference priorities of being missional, intercultural, and formational.
- To encourage the growth of leadership, skills, and theological formation for our lay leaders and pastors without seminary education.

LEARN MORE AT
mosaicmennonites.org/institute



COURSE DESCRIPTION

This learning experience is envisioned as a mentor model of leadership development. Its purpose is discipleship: growth in the character, content, and craft of leadership as disciples of Jesus Christ. The mentor partnerships are self-arranged; an experienced leader and one or two less-experienced leader(s) pair themselves as “partners in leadership”.

WHO CAN PARTICIPATE?

- Pastors
- Lay-leaders
- Board members
- Business leaders
- School leaders
- Young Adults

PLENARY GATHERING

Franconia Mennonite Church
613 Harleysville Pike, Telford, PA

DATES

January 30, April 17, June 26 2021

INSTRUCTORS

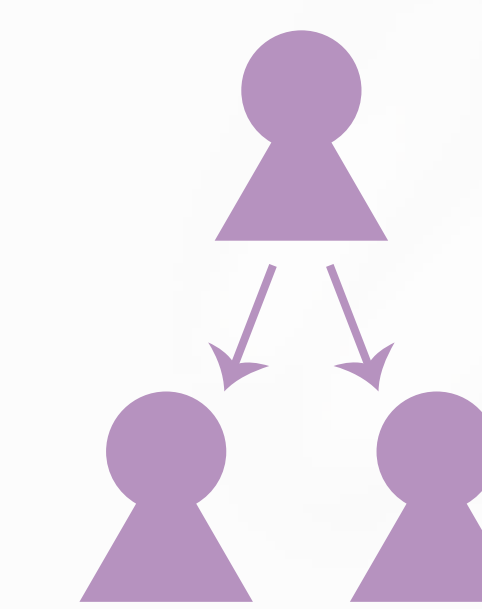
Rose Bender, Nathan Good, Mark Wenger and others

COST

\$75 per person payable to
Mosaic Mennonite Conference

COMPONENTS:

1 PARTNERS



The mentor partnerships are self-arranged; an experienced leader and one or two less-experienced leader(s) pair themselves as “partners in leadership”

2 MEETINGS



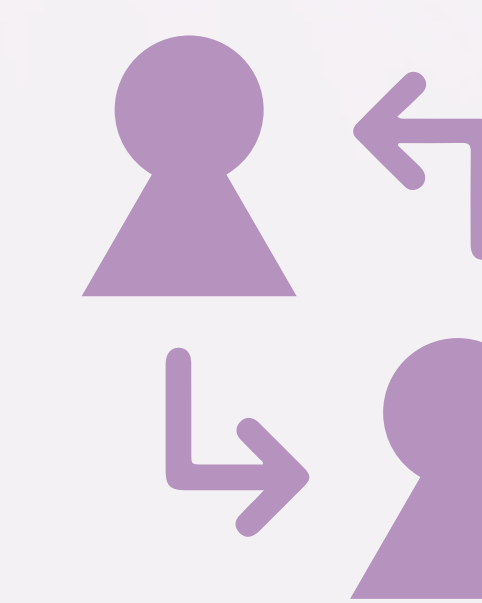
Partners meet together twice each month—60-90 minutes—for 5 months.

3 SPIRITUAL FORMATION



Partners read assigned Scriptures and portions from a textbook for discussion. In addition, partners select a spiritual discipline to practice together for the duration of the course.

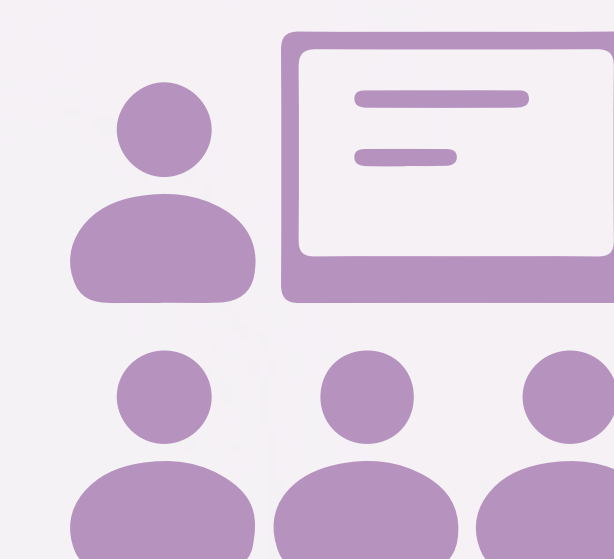
4 ENGAGE LEADERSHIP TOPICS



Partners select from suggested resources for each monthly topic to spark conversation and make application for their context.

- **Spiritual Life / Character and Leadership**
- **Anabaptist Understandings of Leadership**
- **Boundaries, Accountability and Leadership**
- **Communication, Conflict and Leadership**
- **Dreaming and Bringing Others Along**

5 SEMINARS



Partners attend three plenary gatherings planned for all participants at the beginning, middle, and end of the learning experience.